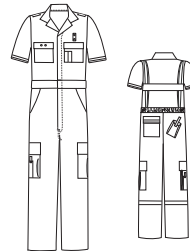




Metro Style One-Piece Suit

PC04- 65% Polyester / 35% Cotton Comfort Twill

- Fabric weight 5.5 oz.
- Two patch breast pockets with pocket flaps and hook and loop closure which run the full width of the pocket
- Left breast pocket has a pen/pencil compartment on the outside
- Right breast pocket has horizontally placed badge eyelets in the pocket flap
- Badge tab on the left front with metal eyelets
- Short sleeves with 1" Scotchlite® lime yellow trim on cuffs
- Concealed heavy-duty, two-way brass zipper
- Unique design glove/scissor pocket on the right leg. The pocket comprises a three part scissor pocket on the outside, a separate glove pocket in the center with a large 8½" x 9" bellowed cargo pocket behind. The separate glove pocket in the center measures 5½" x 7½" and ensures that surgical gloves can be stored separately from other items. The glove/scissor pocket fastens closed with a pocket flap and hook and loop tape
- The left leg has a low profile pleated pocket which fastens closed with a pocket flap and hook and loop tape
- Patch hip pocket on the left rear with pocket flap and hook and loop tape closure
- Hip pocket has 1" Scotchlite® lime yellow trim across the width of the pocket
- Bellowed radio pocket on the right rear with hook and loop closure. Radio pocket measures 6" x 2" with a 1½" bellow
- Pleated bi-swing back with elasticized waist
- Suit back has 1" Scotchlite® lime yellow reflective trim across the back placed 4" above the waistband
- Side pockets with "self fabric" pocketing
- Reinforced knees for enhanced durability
- Microphone loop on both shoulders



Squad Suit T-14

SS60- Dupont NOMEX® Aramid

- Fabric weight 6 oz.
- Pleated bi-swing back with elasticized waist
- Heavy-duty, two-way brass zipper
- Adjustable hook and loop belt closure
- Adjustable sleeve cuffs
- Two pleated breast pockets with flaps
- Sleeve pockets on both sleeves
- Two patch hip pockets on the rear which fasten closed with pocket flaps and hook and loop tape
- Two pleated cargo pockets on each leg
- Side access to pants
- Reinforced knees
- Zippered leg bottoms with adjustable snaps
- Loose badge tab (in pocket)
- Sewn throughout with NOMEX® thread



DuPont™
Nomex®

5605 Navy

5639 Black

NFPA 70E Arc Rating
6.0 oz. - 5.7
PPE Category 1

