

CDC Tactical Wear Coverall

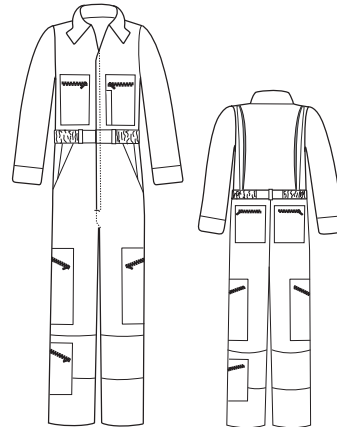


CO43- 65% Polyester / 35% Cotton

- Fabric weight 5.5 oz.
- Hook and loop closure at neck
- Two breast pockets with zipper closures
- Pencil slot on left breast
- Concealed heavy-duty, two-way brass zipper
- Cuffs on sleeves with concealed snap closure
- Pleated bi-swing back with elasticized inserts
- Two inserted front pockets are reinforced at bottom
- Double reinforcement over knees
- Cargo pocket on each leg with a zipper closure
- Additional cargo pocket below right knee with slanted zipper closure
- Belt loops
- Two zippered hip pockets



0672 Olive



Deluxe Lined Coverall



CO14- 65% Polyester / 35% Cotton

- Fabric weight 7.75 oz.
- Lining fabric: 6.0 oz. polyester batting quilted to polyester facecloth
- Heavy-duty, two-way brass zipper
- Large knit collar with hook and loop closure
- Two breast pockets with zippers
- Removable lined hood with draw-string
- 2-in-1 pocket on left sleeve, larger section has zippered top
- Two inserted front pockets
- Two hip pockets with overlapping flaps
- 16" leg zippers



1475 Spruce

