

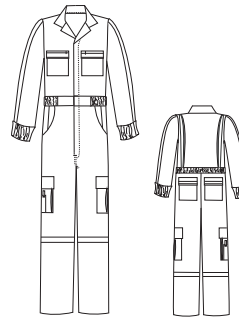
Long Sleeve Over-The-Clothes Fit Uniform Suit



1805 Navy

PC01- 65% Polyester / 35% Cotton Comfort Twill

- Fabric weight 7.75 oz.
- Two patch breast pockets with zipper closure and 1" Scotchlite® reflective trim across the width of the pocket
- Concealed heavy-duty, two-way brass zipper
- Sleeves have 1" Scotchlite® reflective trim from shoulder to cuff
- Cuffs fasten with concealed snaps
- Unique design glove/scissor pocket on the right leg. The pocket comprises a three part scissor pocket on the outside, a separate glove pocket in the center with a large 8½" x 9" bellowed cargo pocket behind. The separate glove pocket in the center measures 5½" x 7½" and ensures that surgical gloves can be stored separately from other items. The glove/scissor pocket fastens closed with a pocket flap and hook and loop tape
- The left leg has a spacious pleated cargo pocket measuring 9" x 9". The cargo pocket fastens closed with a pocket flap and hook and loop tape
- Two patch hip pockets on the rear which fasten closed with pocket flaps and hook and loop tape. Hip pockets have 1" Scotchlite® reflective trim across the width of the pocket
- Pleated bi-swing back with elasticized waist
- Reinforced knees for enhanced durability
- Suit legs have 1" Scotchlite® reflective trim around the leg below the knee
- Side pockets with "self fabric" pocketing and side access to pants with snap closure



Squad Suit T-14

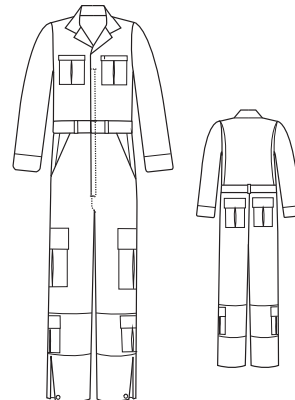
SS60- 65% Polyester / 35% Cotton

- Fabric weight 7.75 oz.
- Pleated bi-swing back with elasticized waist
- Heavy-duty, two-way brass zipper
- Adjustable hook and loop belt closure
- Two pleated breast pockets with flaps
- Sleeve pockets on both sleeves
- Two pleated cargo pockets on each leg
- Side access to pants
- Reinforced knees
- Adjustable sleeve cuffs
- Zippered leg bottoms with adjustable snaps
- Loose badge tab (in pocket)



1110 Midnight

1139 Black



Squad Suit

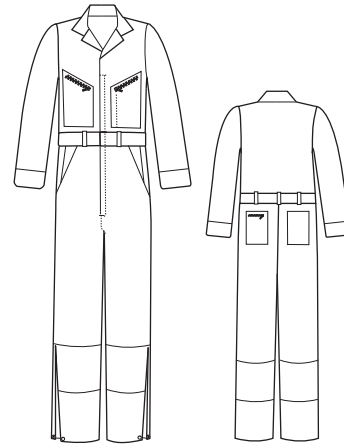


SS40- 65% Polyester / 35% Cotton

- Fabric weight 6.5 oz.
- Pleated bi-swing back with elasticized waist
- Heavy-duty, two-way brass zipper
- Adjustable hook and loop belt closure
- Two slanted breast pockets have zippers; left breast pocket has pencil slot
- Two inserted side pockets
- Two rear patch pockets with a zipper on the left pocket
- Large utility pocket on right leg
- Side access to pants
- Reinforced knees
- Zippered leg bottoms with adjustable snaps
- Loose badge tab (in pocket)



1010 Midnight



Short Sleeve Squad Suit



SS63- 65% Polyester / 35% Cotton

- Fabric weight 6.5 oz.
- Pleated bi-swing back with elasticized waist
- Heavy-duty, two-way brass zipper
- Adjustable hook and loop belt closure
- Two slanted breast pockets have zippers; left breast pocket has pencil slot
- Two inserted front pockets
- Two rear patch pockets with a zipper on the left pocket
- Large utility pocket on right leg
- Side access to pants
- Reinforced knees
- Zippered leg bottoms with adjustable snaps
- Loose badge tab (in pocket)



1010 Midnight

